

LOYAL LIFE CARE PRIVATE LIMITED

Incredible Quality...

Inspiring Taste...

Ideal Wellness ...

WELCOMES YOU





ABOUT US

Loyal Life Care Private Limited is a forward-thinking **Health & Wellness company** committed to delivering innovative, high-quality nutritional and lifestyle products.

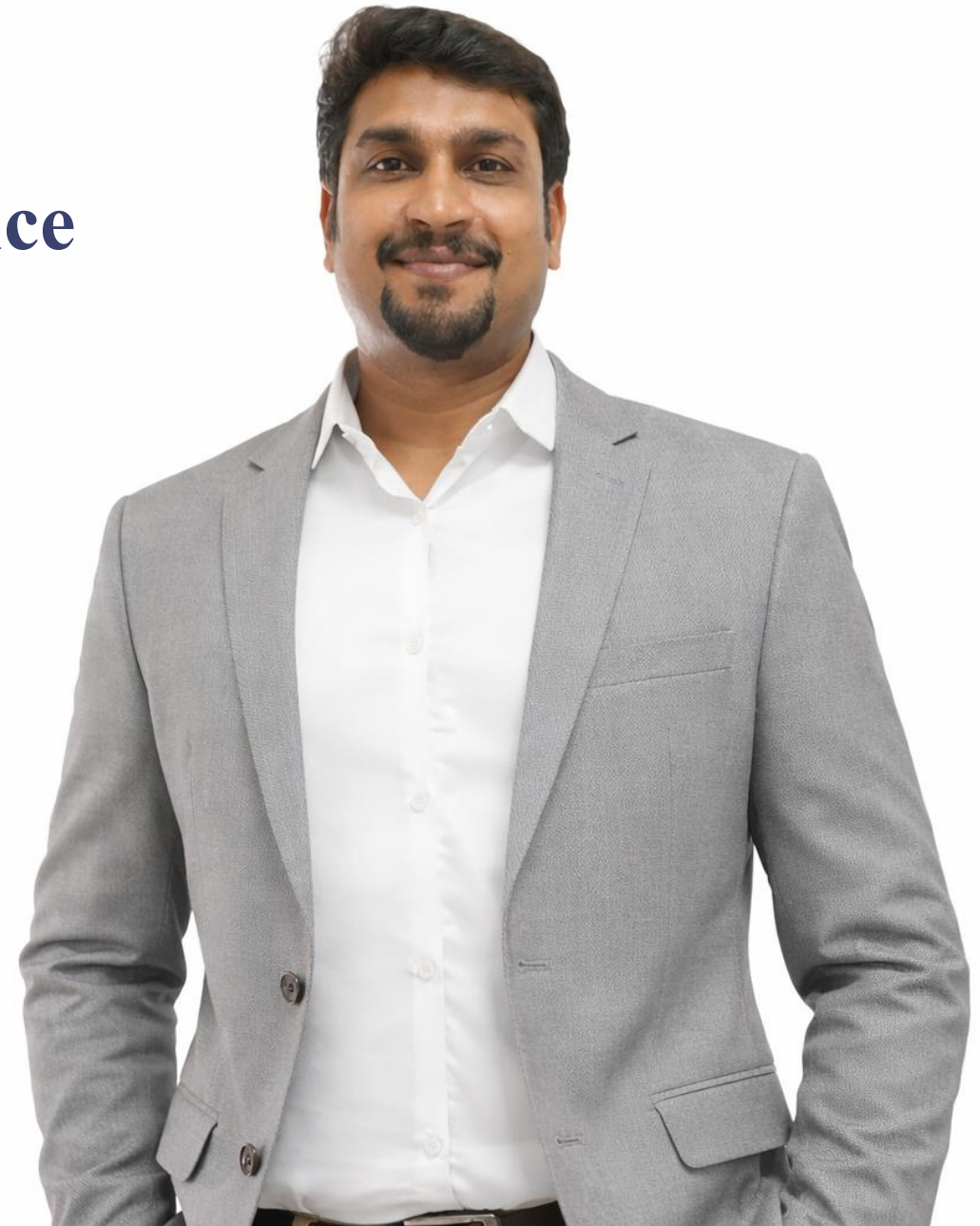
With a strong focus on **scientific formulation, natural ingredients, and consumer trust**, the company has established a distinctive presence in the wellness market.

Founder's Leadership & Experience

Loyal Life Care has been built under the visionary leadership of its Founder and Managing Director, **Mr. Ayyappan Balan**.

With over 20 years of experience in the health sector, his expertise and leadership form the foundation of the company.

By introducing certified nutritional supplements and health drinks that enhance immunity, the company has earned strong goodwill and trust among customers and distributors and continues to progress steadily on a growth-driven path.





Future vision

Loyal Life Care plans to enter the Beverages and Biscuits segment, one of the world's largest consumer markets, with multiple innovative product dimensions in the near future.



Our Proud Signature Products

All Our Green Tea Are:

- **No added sugar**
- **Non-bitter, pleasant taste**
- **Sweetened with low-calorie natural sweeteners**
- **Suitable for all age groups**
- **Instant preparation with hot or cold water**



Highlights of our tea products

INSTANT HERBAL GREEN TEA

- A Pioneering Tea, Trusted And Loved For Over A Decade. Exceptional Taste, Superior Quality, And Remarkable Natural Health Benefits.
- Formulated With Green Tea Enriched With Ginger, Tulsi, Mint, Pepper, Amla, And Low Calorie Blend

120ML HOT WATER



CUT



MIX



DRINK



INSTANT LEMON GREEN TEA

- A Pioneering Tea, Trusted And Loved For Over A Decade. Exceptional Taste, Superior Quality, And Remarkable Natural Health Benefits.
- Green Tea With Lemon And Low Calorie Blend.

120ML HOT (OR) COLD WATER



CUT



MIX



DRINK





GREEN TEA KEY HEALTH BENEFITS

- **High in Antioxidants:** Green tea is rich in polyphenols, particularly EGCG (Epigallocatechin 3-Gallate), which fights oxidative stress, reduces inflammation, and prevents cell damage.
- **Heart Health:** Regular consumption may lower "bad" (LDL) and total cholesterol, and help reduce high blood pressure, potentially decreasing the risk of heart disease and stroke.
- **Brain Function:** The combination of **caffeine** and **L-theanine** can improve alertness, mood, and memory while providing a "calm focus" without the jitters associated with coffee.
- **Weight Management:** Green tea may boost metabolism and increase fat burning, particularly during exercise, though overall weight loss effects are often modest.
- **Blood Sugar Control:** It can improve insulin sensitivity and help regulate fasting blood sugar levels, which is beneficial for managing or preventing type 2 diabetes.
- **Cancer Prevention:** While evidence is mixed, some studies suggest its antioxidants may lower the risk of certain cancers, including breast, prostate, and colorectal cancer.
- **Oral Health:** Catechins inhibit the growth of bacteria responsible for plaque, potentially reducing the risk of cavities and bad breath.
- **Skin and Aging:** Anti-inflammatory properties may help reduce acne and protect skin from UV damage and premature aging.





The Indian tea market is a massive, growing industry, with the green tea segment rapidly expanding due to health trends, while the instant/premix sector shows high growth potential for convenience.

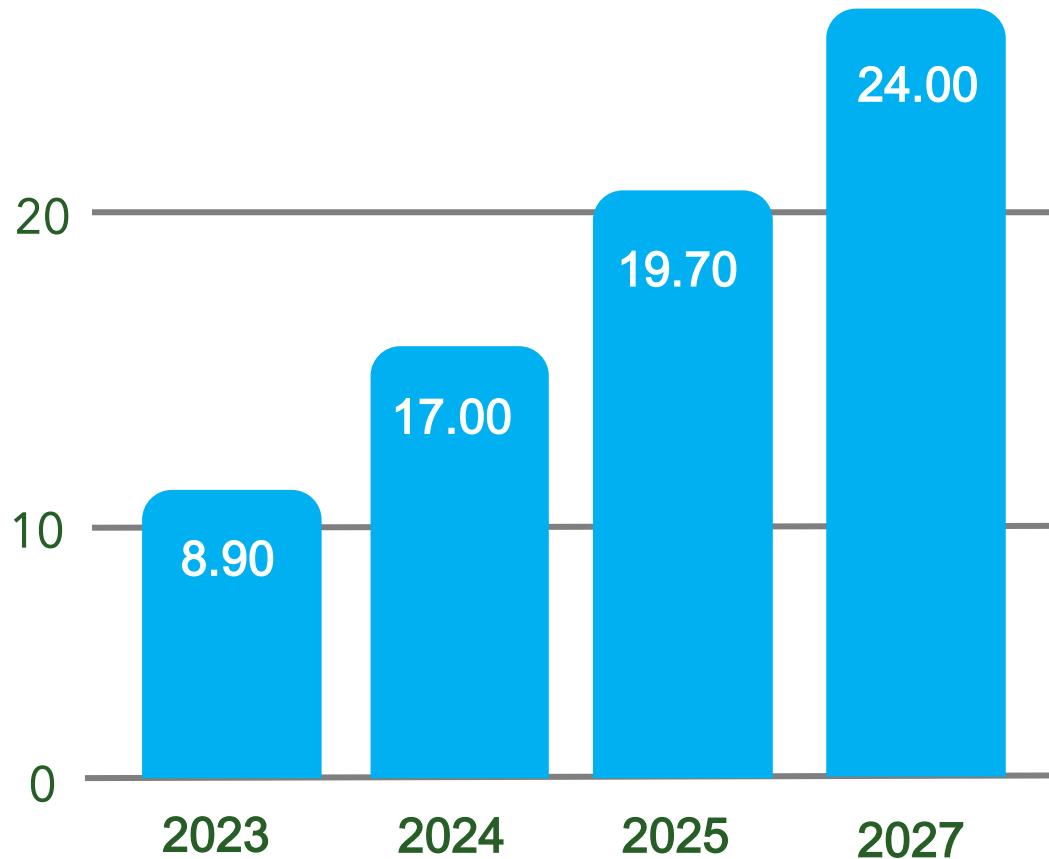
- **Green Tea:** Valued at USD 0.57 Billion in 2024, projected to reach USD 1.20 Billion by 2030 (13.4% CAGR).
- **Instant Tea Premix:** Valued at USD 37.6 million in 2022, projected to reach USD 88.7 million by 2032 (9.0% CAGR).
- **Black Tea/Overall Tea:** The total tea industry is valued at USD 10.5–11.86 Billion, with strong, traditional demand for black tea.

Key Market Drivers & Trends

- **Health Consciousness:** Rising demand for green and functional (herbal) teas for immunity and metabolism.
- **Convenience:** High growth in the instant/premix segment due to fast-paced lifestyles.
- **Premiumization:** Shift towards organic and flavored varieties.



India Soft Drink Market Revenue Projection (USD Billions)



SOFT DRINK INDUSTRY MARKET SIZE IN INDIA

The Indian soft drink market is valued at approximately ₹1.72 lakh crore (USD 20.4–21 billion) in 2024–2025. The industry is experiencing rapid expansion, projected to grow at a Compound Annual Growth Rate (CAGR) of 6.8% to 10%+ through 2026 and beyond, potentially reaching over USD 49 billion by 2027 for carbonated segments

MARKET SEGMENTATION (2025–2026)

• Carbonated Soft Drinks

(CSDs): The dominant segment, holding a 42–45% market share.

• Health & Functional Beverages:

The fastest-growing engine, valued at USD 9.63 billion with a 11.8% CAGR. This includes energy drinks (9% share) and sports drinks.



UNLIMITED INCOME PLAN

- 20% - Retail profit
- 12% - Referral Income
- 12% - Binary Income
- 50% - Level Income
- Awards & Rewards
- Investment Income
- 10+1 Id Offers



JOINING PACKAGE



30'S HERBAL - 2BOX



30'S LEMON - 2BOX

RETAIL PROFIT

- **Joining package ₹2500**
- **Product MRP ₹3000**
- **Discount profit - 20%**



REFERRAL INCOME

- **Earn ₹ 300 For Every Person You Refer.**
- **You Can Directly Refer Unlimited People.**
- **Every Time They Repurchase, You Get ₹300**



BINARY INCOME

- **Each pair get ₹300**
- **Daily ceiling ₹3000**
- **Power carry forward**
- **First pair tail must**



DIRECT LEVEL UNLIMITED INCOME



➤ You will receive **50%** of the binary income earned by the members you directly refer

➤ **Example:**

- You directly referred **5** people.
- Each person earns **₹ 3000** as binary income.
- The total income of **5** people is **₹ 15000**
- You will receive **50%** of this amount as income.
- Your direct level earning: **₹ 7500**

AWARDS & REWARDS

20 PAIR
COMPANY BAG
BRONZE DISTRIBUTOR



100 PAIR
5G MOBILE
SILVER DISTRIBUTOR



250 PAIR
LAPTOP
GOLD DISTRIBUTOR





PLATINUM DISTRIBUTOR

GOA TOUR

500 PAIR

**1000 PAIR
THAILAND TOUR
TITANIUM DISTRIBUTOR**





**DIAMOND DISTRIBUTOR
FULLY PAID ECLECTIC BIKE
2000 PAIRS**

**4000 PAIR
FULLY PAID ALTO K10 CAR
DIAMOND ELITE DISTRIBUTOR**



BEST FEATURES



- **Free membership.**
 - **Daily cut off.**
 - **Power side carry forward.**
 - **Multiple id's are acceptable per person.**
 - **Repurchase not compulsory.**
 - **Repurchase same income**
 - **No time limit for activation, earnings & achievements.**
 - **All over India free courier delivery.**
 - **Courier tracking facility.**
 - **Weekly Wednesday payout.**
 - **Awards & rewards are accumulative calculation**
- **Minimum payout ₹ 250 > 5% -TDS, 10% - service charge apply for every payout.**
- **If pan card is missing or unlinked with Aadhaar, 30% deduction applies.**



GROWTH INVESTMENT SCHEMES

Regular Return Plan

You Will Receive 5% On Your Investment In Every 15 Days. Your Investment Will Be Returned As 200% In 40 Installments.

Fixed Return Plan

Your Investment Will Be Returned At 200% After 300 days

- **Minimum investment ₹25000**
- **Maximum investment unlimited**
- **10% service charge apply**

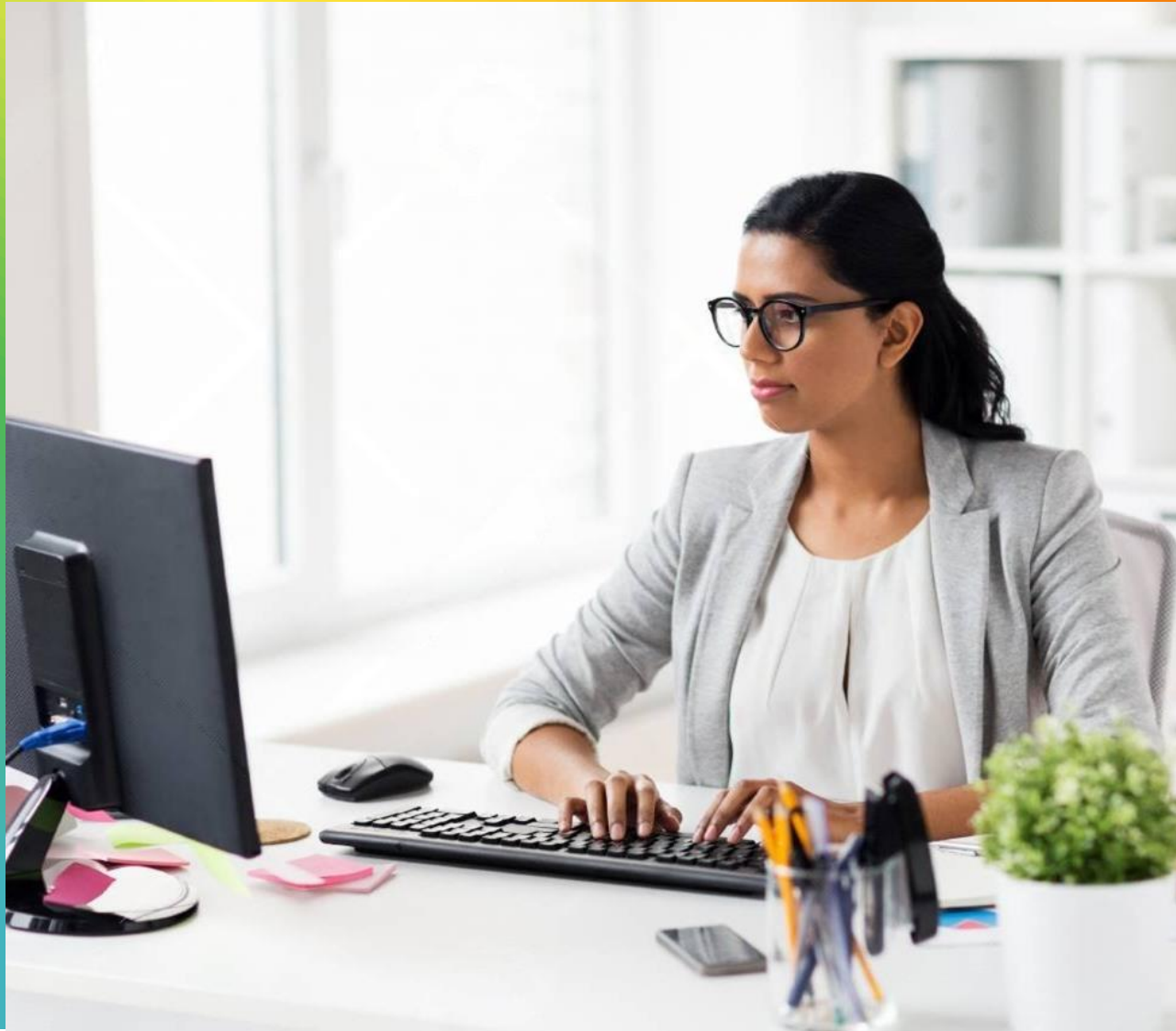
PRE LAUNCHING !!! OFFERS !!!

10+1

Id Activation Free

- **Deposit your purchase wallet
₹ 25,000 and you get ₹ 27,500**
- **ACTIVATION PROFIT - ₹ 2500**





LOYAL LIFE CARE PRIVATE LIMITED

**41, Annamalai Layout, Nalli Hospital Road
Opposite Bus Stand, Erode - 638011**

CONNECT WITH



0424 - 3505391 | 94871 25215



info@loyallifecare.com



www.LoyalLifeCare.com

LOYAL LIFE CARE PRIVATE LIMITED

Incredible Quality...
Inspiring Taste...
Ideal Wellness ...

THANK YOU

